



NOTES:

1. MATERIAL:

- 1.1 HOUSING: THERMOPLASTIC, HIGH TEMP., UL94V-0; COLOR:BLACK.
- 1.2 CONTACT: COPPER ALLOY
- 1.3 FITTING NAIL: COPPER ALLOY

2. FINISH:

- 2.1 CONTACT:
CONTACT:SEE ORDER INFORMATION,
100-200u" MATT TIN PLAING ON SOLDER.
50-100u" NICKEL UNDERPLATED OVERALL.
- 2.2 FITTING NAIL:
100-200u" MATT TIN PLAING ON SOLDER.
50-100u" NICKEL UNDERPLATED OVERALL.

3. REFLOW SOLDER CAPABLE TO 260°C PER ACES SPEC.

4. SPEC. PLS. REFER TO PS-51771-XXXXX-XXX

5. PACKAGE PLS. REFER TO 51771-XXXXX-05-TRP

6. CARD REFER TO PCI EXPRESS M.2 SPECIFICATION

7. KEEP OUT ZONE RESERVED FOR LATCH.

8. KEEP OUT AREA IS THE AREA WHERE THE CONNECTOR (INCLUDES LATCHES IN OPENING POSITION) IS MOUNTED ON THE PCB.

9. PART NUMBER

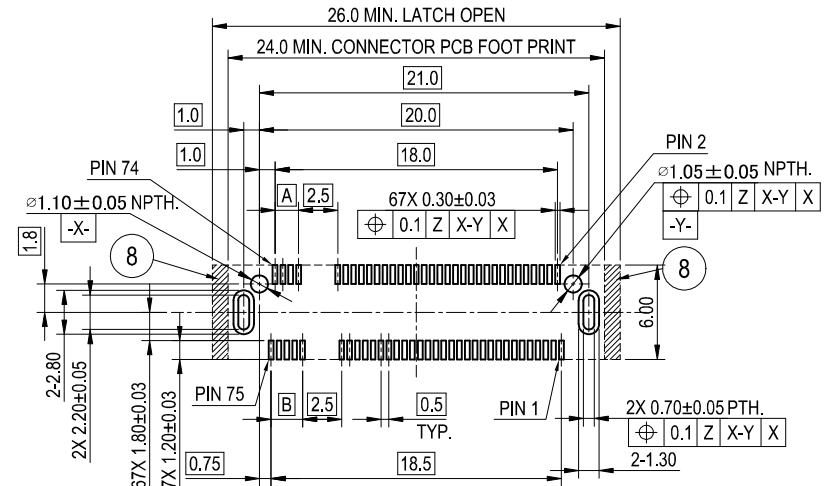
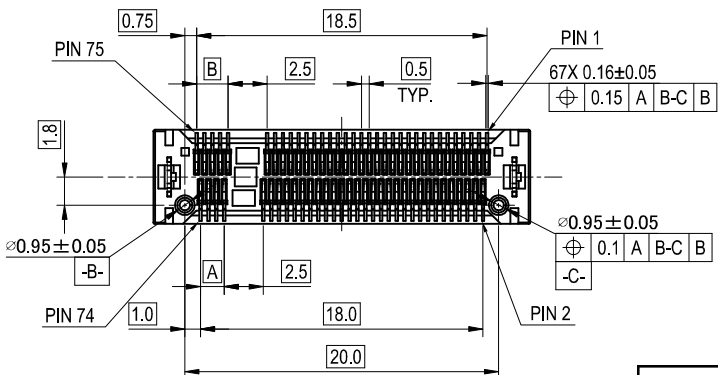
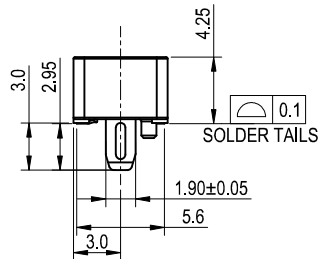
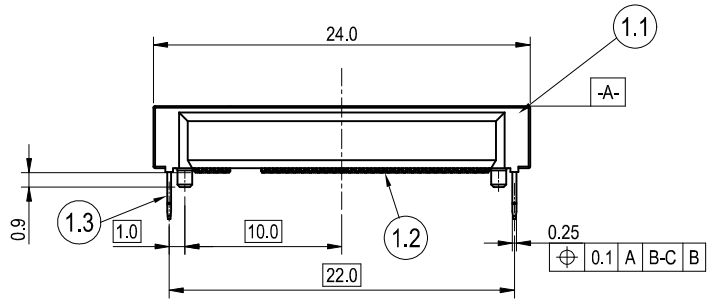
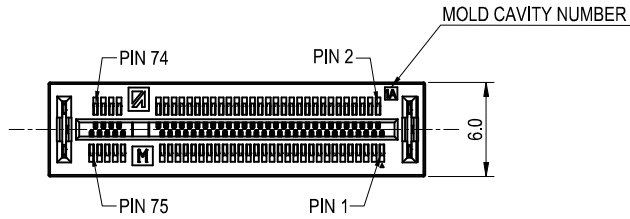
51771- XXX X X - XXX

NO OF CKT
075.CKT

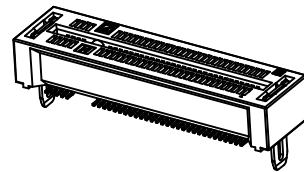
KEY TYPE
012: KEY M

PACKING
0:Tape & Reel

PLATING
1: GOLD FLASH ON CONTACT AREA
100-200u" MATT TIN PLAING ON SOLDER.

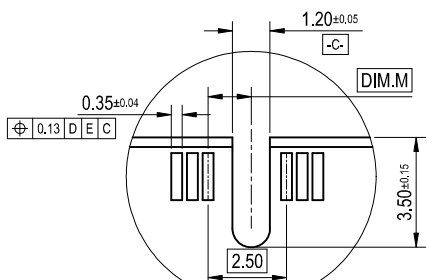
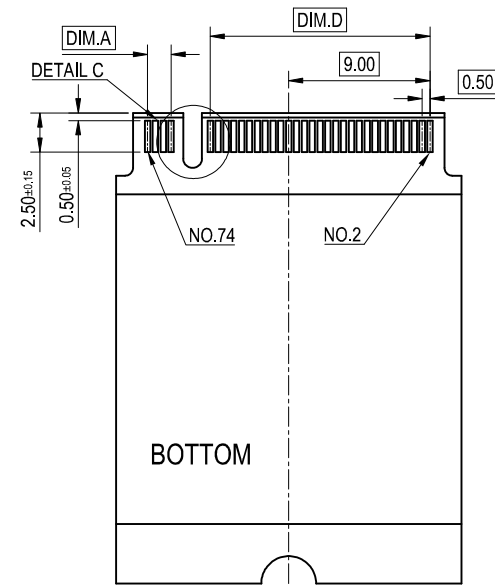
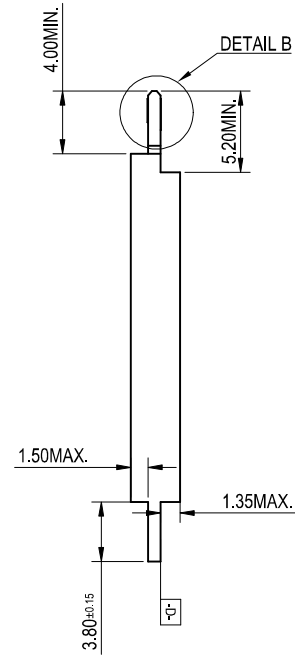
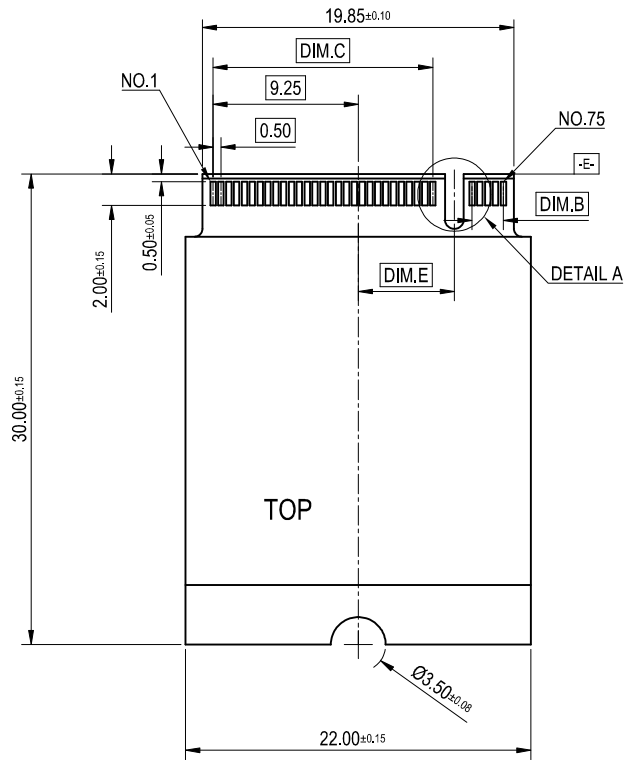


DATUM Z IS THE PCB SOLDER SURFACE
RECOMMENDED P.C.B LAYOUT
TOP VIEW TOLERANCE=±0.05mm

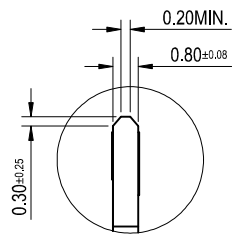


KEYING OPTION	DIM A	DIM B
M	1.5	2.00

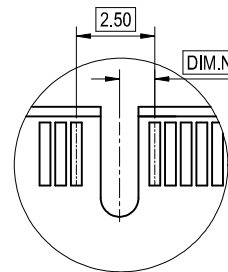
QUALITY SYMBOLS MAJOR Ⓢ CRITICAL Ⓢ GENERAL TOLERANCES (UNLESS SPECIFIED) X. ±0.5 .X ±0.25 .XX ±0.15 .XXX ±0.1 ANGLES ±2°	DRAWN BY Xu,JinJun	DATE 23'/01/11		
	CHECKED BY Xu,ZhiYong	DATE 23'/01/11		TITLE 0.5mm Pitch M.2 CONN.
	APPROVED BY Xu,ZhiYong	DATE 23'/01/11	SMT D/R S/T TYPE H=4.25mm	
	UNITS mm	SCALE 2 : 1	SHEET NO. 1 OF 2	SIZE A4
			REV A	DWG NO. 51771-075XX-XXX



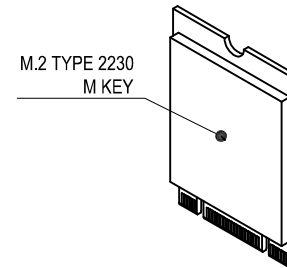
DETAIL A
SCALE 2:1



DETAIL B
SCALE 2:1



DETAIL C
SCALE 2:1



NOTES:
THE LENGTH AND WIDE OF CARD IS REFERED TO PCI EXPRESS M.2 SPECIFICATION
THE DRAWING IS REFERED TO TYPE 2230 (M KEY)

KEYING OPTION	DIM E	DIM C	DIM B	DIM D	DIM A	DIM M	DIM N
M	6.125	14.00	2.00	14.00	1.50	1.375	1.125

QUALITY SYMBOLS MAJOR Ⓢ CRITICAL Ⓢ GENERAL TOLERANCES (UNLESS SPECIFIED) X. ±0.5 .X ±0.25 .XX ±0.15 .XXX ±0.1 ANGLES ±2°	DRAWN BY Xu,JinJun	DATE 23'/01/11		TITLE 0.5mm Pitch M.2 CONN. SMT D/R S/T TYPE H=4.25mm	
	CHECKED BY Xu,ZhiYong	DATE 23'/01/11			
	APPROVED BY Xu,ZhiYong	DATE 23'/01/11	UNITS mm		SIZE A4
	SCALE 2 : 1	SHEET NO. 2 OF 2	REV A		RFQ NO. RFQ-2301026